



# MONTHLY MEMBERSHIP PROGRESS REPORT

District 27 B1

Results as of: 06/30/2018

GMT: MICHAEL MOLEND A

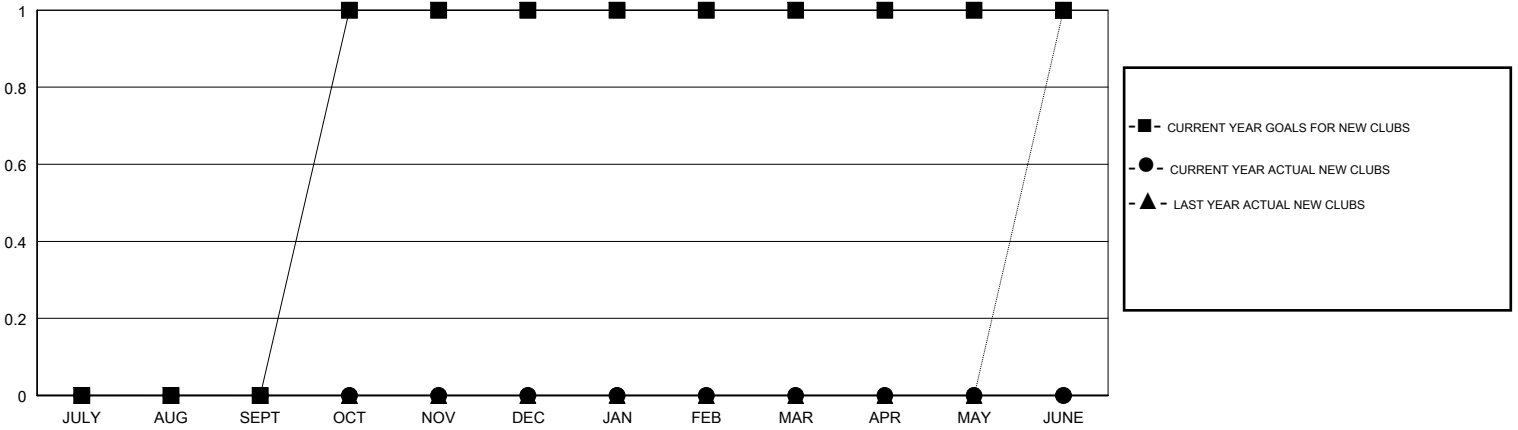
LOCATION WISCONSIN

GMT CA

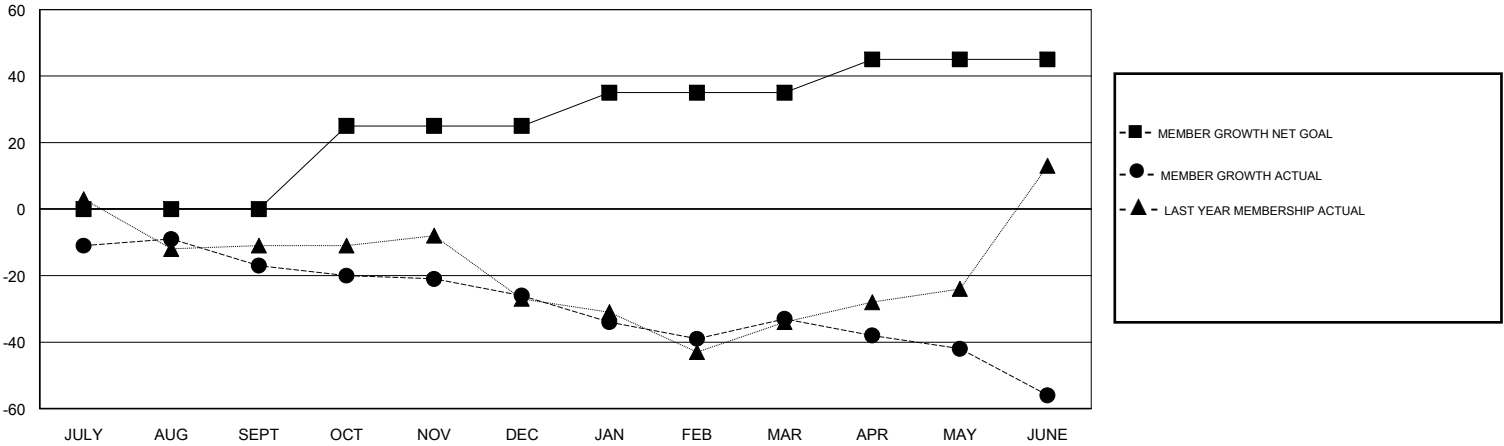
Clubs			
RESULTS FOR 2017-2018			
QUARTER	NEW CLUB GOAL	NEW CLUBS	DROPPED CLUBS
JULY/AUG/SEPT	0	0	0
OCT/NOV/DEC	1	0	0
JAN/FEB/MAR	0	0	0
APR/MAY/JUNE	0	0	1

Members			
RESULTS FOR 2017-2018			
QUARTER	MEMBER GROWTH NET GOAL	MEMBER GROWTH ACTUAL	DROPPED MEMBERS ACTUAL (including transfers)
JULY/AUG/SEPT	0	28	40
OCT/NOV/DEC	25	49	53
JAN/FEB/MAR	10	30	37
APR/MAY/JUNE	10	48	67

GOALS AND ACTUAL NEW CLUBS CUMULATIVE



GOALS AND ACTUAL MEMBERS CUMULATIVE



DROPPED CLUBS: 1
------------------

47 CLUBS OF 69 ADDED 1 OR MORE NEW MEMBERS

GENDER DISTRIBUTION	
MALE	1,546 (78.60%)
FEMALE	421 (21.40%)
Women Percentage Fiscal Year Goal: 22%	

DROPPED MEMBERS	
DECEASED	37
CLUB CANCELLED	10
OTHER	150
<b>TOTAL</b>	<b>197</b>

[CLICK HERE FOR CUMULATIVE MEMBERSHIP DATA](#)

TOTAL FAMILY UNIT MEMBERS	0
FAMILY MEMBERS PAYING HALF DUES	0